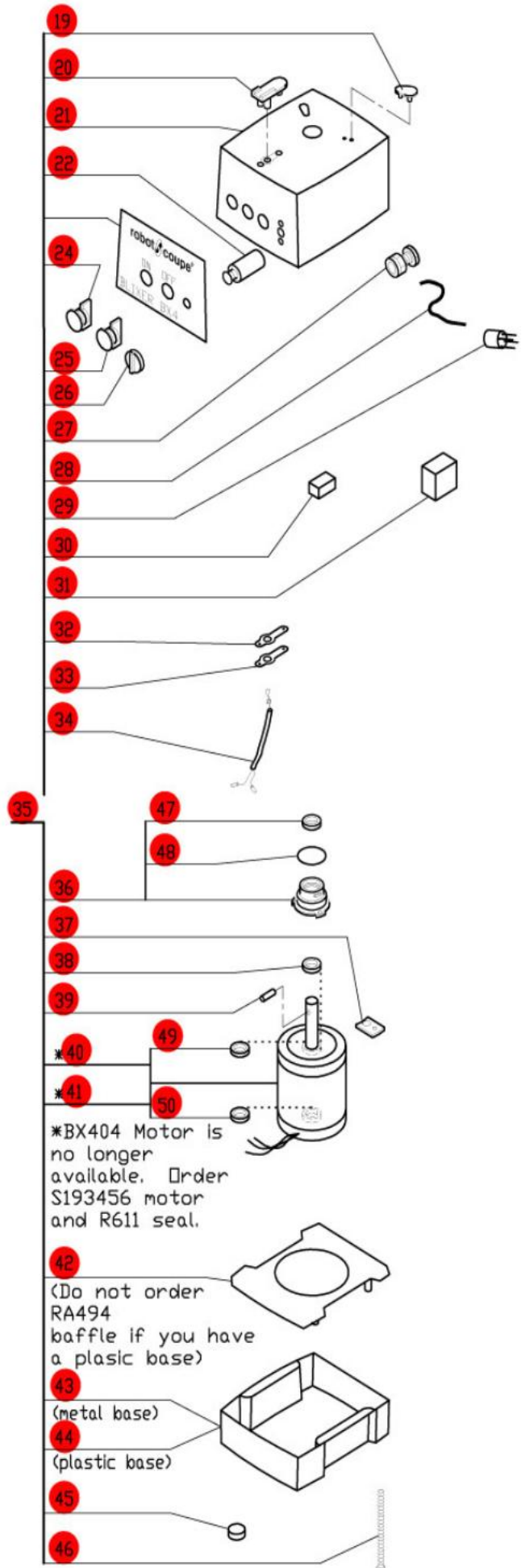
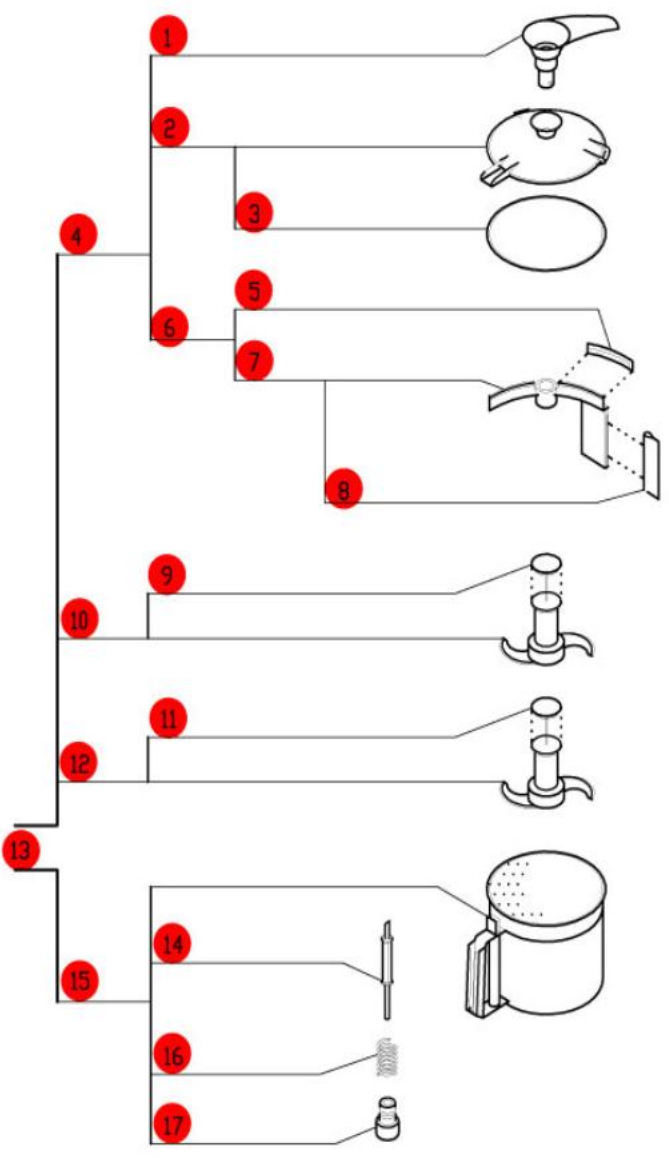
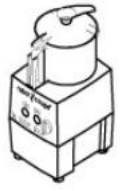


BX4 Blixer®

2 Speed, 208-240 Volt, 3 Phase, 60Hz., 2 HP.

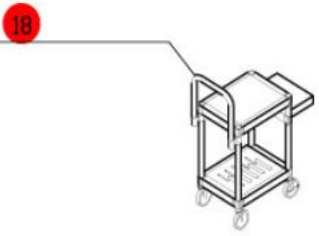
Low Speed-1725 RPM, 5.3 Amps

High Speed-3450 RPM, 5.8 Amps



**Need Help
Call us
800-465-6060**

ACCESSORIES



*BX404 Motor is no longer available. Order S193456 motor and R611 seal.

42 (Do not order RA494 baffle if you have a plastic base)

43 (metal base)

44 (plastic base)

45

46